

# **Research in the Trust**

## **Report for Quality Academy**

### **June 2021**

This report provides an update on research activities in the Trust, highlighting some of the activities of our research teams and provides information on some of the developments that are happening.

#### **RESEARCH ACTIVITY AND COVID-19**

Research studies that were paused due to the pandemic are now beginning to restart along with new studies as there is no longer a requirement to prioritise new COVID-19 research studies at this time. Therefore the clinical research workforce have been restarting studies/ starting new studies alongside providing continuing support for the Novovax COVID-19 vaccine trial which will continue until the end of the year; this has just gone through a cross-over phase whereby those on placebo received the vaccine and vice versa – this has involved the vaccination of 454 original volunteers again.



The Trust are also involved in the CovBoost study which started at the beginning of June after being one of only 18 sites in the UK chosen to run it due to our Novovax success. Additionally we recruited the world's first patient to this study – our very own Dr Alex Brown! This study looks at whether a booster vaccination is beneficial and the Trust is aiming to recruit around 150 volunteers to the study.

#### **RESEARCH ENGAGEMENT AND CQC**

The Trust Research Matron (Jenny Syson) has been looking at research engagement within clinical services and has been visiting the Matrons and ward areas to meet the staff and understand how we can best promote the research work in the clinical areas and to the patients. We are looking at noticeboards and posters to start, to ensure it is obvious to patients what research is happening in their area and how they can contact the research teams which will help us meet CQC requirements as research is now part of section W8 Trust wide well-led category<sup>1</sup>.

---

<sup>1</sup> CQC guidance issued in January 2020

## RESEARCH DELIVERY WORKFORCE

The regular research workforce meetings have been reinstated due to being paused during the pandemic and staff changes. From these meetings a working group has been set up to create a local induction package for research staff which will help orientate new starters who start work in a research role.

Work has also been undertaken with the Education team to add research as an assessed placement area for student nurses. This has involved upskilling most of the research nurses who haven't had the opportunity to support students recently and the vast majority were not currently qualified to do so. Bespoke training has been organised with the Education team and there is now 30+ nurses qualified to support/assess students. The feedback from the first students to undertake a research placement has been very positive.

Individual meetings have also taken place over the last month with most of the clinical research teams (some are due to take place this month) to discuss studies, funding staffing and performance.

## 'CITY OF RESEARCH' LAUNCHED

To mark International Clinical Trials Day on 20<sup>th</sup> May 2021, a new 'City of Research' campaign was launched to encourage more volunteers from across Bradford, Airedale and Craven to sign up to take part in research. Led by the Trust with the other main NHS organisation in the district - Airedale NHS Foundation Trust; Bradford District Care NHS Foundation Trust; and Bradford District and Craven Clinical Commissioning Group - the initiative is spearheaded by a new website [www.cityofresearch.org](http://www.cityofresearch.org) which offers a digital doorway into all the growing opportunities and studies that the district's home-grown research talent is leading.



By joining the research registry, people can choose from many different ways in which they can contribute – from clinical trials of current or new treatments, to taking part in questionnaires or focus groups to testing medical equipment.

The project to develop the website was awarded funding by the Yorkshire and Humber Clinical Research Network, part of the National Institute for Health Research and it was built by a team from the Working Academy at the University of Bradford.

## NIHR NATIONAL PATIENT RECRUITMENT CENTRE: BRADFORD

Our PRC is now running a third study (as well as the recently completed Gilead study and the Novavax trial); this study is a cardiovascular study which is being headed by Dr Steven Lindsay. The late-phase 'DAPA-MI' clinical research trial evaluates AstraZeneca's drug, Farxiga (dapagliflozin) as a treatment to reduce mortality and the risk of heart failure following a heart attack.

## APPLIED HEALTH RESEARCH



The Academic Unit for Ageing and Stroke Research (ASR) continues striving to improve health status for older people and stroke survivors through high quality collaborative research.

As we just passed the first anniversary of the national lockdown, the ASR is pleased to see research projects resume and edging closer to normality. In particular recruitments to our three large randomised trials are progressing well:

- Our NIHR HTA funded home-based exercise intervention for older people with frailty (HERO) trial has to date recruited an impressive 700 participants. Recruitment is still on-going across Yorkshire and in the Southwest, with an overall target of 742.
- The RECREATE trial continues to open up new sites across the nation with 30 participants recruited so far. The study aims to evaluate the clinical and cost-effectiveness of an intervention that intends to enhance health and disability outcomes for stroke survivors through reducing sedentary behaviour.
- We are also pleased to announce after much work on overcoming challenges imposed by the effects of the coronavirus, our PROSPER trial evaluating a personalised care planning programme to improve quality of life for older people with frailty has successfully managed to randomised its first participant. The team is currently working closely with general practices to open more sites across Yorkshire and the North West.

Building on the success of our multi-award winning Electronic Frailty Index which allows identification of people with frailty through routine data, the team led by Professor Andrew Clegg has been busy with developing the Electronic Frailty Index 2 (eFI-2). The work is funded by the National Institute for Health Research (NIHR) and is also part of the Yorkshire and Humber Applied Research Collaboration (ARC).

In the last finance year the ASR published 30 research papers to disseminate significant findings from our portfolio of research. This includes publication of findings from two large research programmes funded by the National Institute for Health Research which were published on the same day:

- Longer-term health and social care strategies for stroke survivors and their carers: the LoTS2Care research programme including cluster feasibility RCT - <https://doi.org/10.3310/pgfar09030>

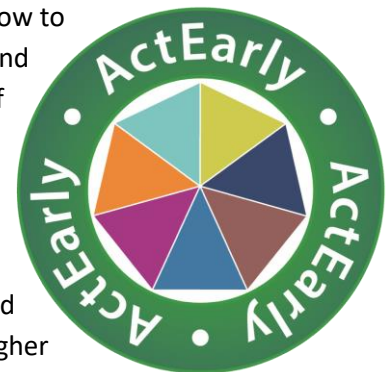
- The Prevention of Delirium system of care for older patients admitted to hospital for emergency care: the POD research programme including feasibility RCT - <https://doi.org/10.3310/pgfar09040>

## ACTEARLY



ActEarly <https://actearly.org.uk> is one of the first round of funded UK Prevention Research Partnership (UKPRP) consortia with a £6 million investment to create healthier and fairer environments for children growing up in Bradford and Tower Hamlets. The UKPRP is a collaboration of funders who are supporting a change in public health research funding which includes a less focus on individual behaviour change and individual interventions, and greater commitment to whole system and environmental changes.

In ActEarly, we are creating ActEarly City Collaboratories to find out how to make healthier places, provide better learning opportunities, and support people's livelihoods. We know that areas with high levels of child poverty tend to have: poorer levels of child development, school readiness and educational attainment, high levels of obesity, more high risk behaviours, poor quality, overcrowded unfit and noisy housing, busy, polluted roads with low walkability, poor quality green spaces for play and exercise, high fast food outlet density and food deserts, more looked after children, poor performing schools and higher school exclusion rates, higher levels of youth crime and lower entry into further education, training or employment. These wider determinants damage child health, promote clustering of unhealthy behaviours, impair life opportunities and increase longer term Non Communicable Disease (NCD) risk and NHS burden. Most of our ActEarly interventions and evaluations are addressing these wider factors and as such are within the remit of local government so we work closely with Bradford Metropolitan District Council and Tower Hamlets Council as well as other partners including universities, ICSs, VSCs and charities such as Sustrans and the NSPCC.



In our first 18 months, we have started to develop research projects around air quality, education, reducing child obesity, and lifting people out of poverty. We have also started to develop better research methods that provide results for local authorities within the timelines they work with but that remain robust, and we are building on our data infrastructure so that researchers can access and use health, social, education, crime, transport and housing data to inform policy and decision making across our two local authority areas. Over the last year we have delivered analyses and briefing reports for the Bradford CSAG, secured external funding (e.g. <https://fundingawards.nihr.ac.uk/award/NIHR131797>), we have published our vision and work so far (e.g. <https://actearly.org.uk/learning-during-the-lockdown-real-time-data-on-childrens-experiences-during-home-learning/>), submitted our annual report to the UKPRP which was well received, and have held two ActEarly workshops to connect with our members, partners and communities.

## **BORN IN BRADFORD**

Born in Bradford is an internationally recognised research programme which aims to find out what keeps families healthy and happy. We use this information to work with the local authority, health, education and voluntary sector providers across Bradford district to develop, implement and evaluate ambitious programmes to improve population health. We have a vast 'city of research' infrastructure which includes detailed health and wellbeing information on Bradfordians enrolled in our three birth cohort studies and a connected routine dataset of health, social care and education data for over 700,000 citizens living in Bradford and Airedale. We host a range of initiatives to improve health working with the local authority, health, education, cultural and voluntary sector providers. These include the Better Start Bradford Innovation Hub, Bradford Inequalities Research, the Healthy Families theme of the Yorkshire and Humber Applied Research Collaboration, Connected Bradford, Join Us: Move Play, the LEAP and various other externally funded applied health research studies.

More information about the research programme can be found at [www.borninbradford.nhs.uk](http://www.borninbradford.nhs.uk).

The Born in Bradford team have had a very productive start to 2021. In addition to our core research programme, our teams have been contributing to a large amount of urgent public COVID-19 research projects. We are delighted to have been awarded formal funding via the National Institute for Health Research, Health Foundation and UKRI to progress our important work. Projects led by BiB are well underway and include understanding the impact of COVID-19 in pregnancy (<https://www.ukri.org/our-work/tackling-the-impact-of-covid-19/understanding-coronavirus-covid-19-and-epidemics/the-impact-of-covid-19-in-pregnancy/>), and the BiB COVID-19 study which will explore the wider health, social and economic impacts of the pandemic in Bradford (<https://www.health.org.uk/funding-and-partnerships/programmes/the-born-in-bradford-bib-covid-19-research-study>). You can find out more about our findings from these studies here: <https://www.bradfordresearch.nhs.uk/c-sag/>.

We have also been awarded funding to contribute to two high profile national research projects both led by UCL: the CONVALESCENCE study (Characterisation, determinants, mechanisms and consequences of the long-term effects of COVID-19: providing the evidence base for health care services) and the COVID-19 National Core Studies – Longitudinal Health and Wellbeing team. Our efforts will help understand long-term consequences of COVID-19 and will inform guidance on how best to support communities in the aftermath of the pandemic.

Our JU:MP team (Join Us: Move Play <https://joinusmoveplay.org/>) have received a further £6 million in funding from Sport England to promote physical activity and play in eight neighbourhoods within the city. This ground breaking project includes both an implementation and research arm hosted within the Born in Bradford team. Our evaluation will help identify how we can best galvanise communities and decision makers to promote physical activity by focusing on making system changes.



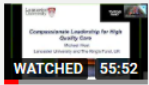


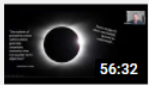

The past year has been challenging for our research team and families alike. We are truly appreciative of the time all of our Born in Bradford families give to us whether it be completing questionnaires, attending research clinic appointments or giving feedback via our engagement groups. In May we organised for a little thank you and sent out 'sunflower seeds of hope' to over 20,000 BiB families. We are hoping to share pictures of our families' flowers blooming over the coming months.



### Quality and Safety Research team

The Quality and Safety team currently host one of the country's three NIHR Patient Safety Translational Research Centres see <https://yhpstrc.org/>. In June we received news from NIHR that we will now receive an extension to funding for 8 months, taking our current funding up to April 2023. The NIHR have approved our plans for the extension period which will focus on applications for further funding to support sustainability and build capacity in the longer term as well as work to disseminate and optimise the impact of the current work.

Earlier this month, Rebecca Lawton and the team working on the REDEPLOY (Redeployment of nurses during COVID-19) study were invited to present early findings on how redeployment was managed in three NHS Trusts: BTHFT, Oxford University Hospital and Barts. The presentation to 300 nurses and nursing managers and researchers was part of a series of talks 'Nursing Research Matters' supported by NHS England, Improvement and delivered via the University of Huddersfield. National interest in this study is palpable and the huge support from the Senior Nursing team and many others within BTHFT has helped to position the Trust and research team as leading the way in research on this topic.

|   |   |  |  |
|---|---|--|--|
| 1 |  | Michael West - Compassionate Leadership for Cultures of High Reliability (YQSR Seminar Series) | Yorkshire Quality and Safety Research Group - YQSR |
| 2 |  | Doing Less in Healthcare - Natalie Armstrong (YQSR Seminar Series)                             | Yorkshire Quality and Safety Research Group - YQSR |
| 3 |  | Healing After Harm: A Restorative Approach to Incidents - Jo Venn                              | Yorkshire Quality and Safety Research Group - YQSR |
| 4 |  | Knowledge Brokering to get Evidence into Policy and Practice (YQSR Seminar Series)             | Yorkshire Quality and Safety Research Group - YQSR |
| 5 |  | Evolving Patient Safety - Matt Fogarty (YQSR Seminar Series)                                   | Yorkshire Quality and Safety Research Group - YQSR |

The Quality and Safety research team continues to host a hugely successful patient safety seminar series. Over the last year we have moved to online delivery and all the seminars are recorded and hosted on our YQSR YouTube channel. All Trust staff are invited to these seminars and, if they are not able to attend, can watch them afterwards online at: [https://www.youtube.com/playlist?list=PLIZd8dUfXhZ9iypRqWEAgzitAzwwO0byf\\_](https://www.youtube.com/playlist?list=PLIZd8dUfXhZ9iypRqWEAgzitAzwwO0byf_)

For example, in the last few months we have hosted Professor Michael West talking about compassionate leadership, Matt Fogarty – Deputy

Director of NHS England, Improvement talking about Patient Safety Policy and a variety of other fascinating speakers.

Over the last three years our Partners at Care Transitions team have been developing an intervention to support older people as they move from hospital to home. We will be working with BTHFT as one of 11 Trusts delivering this intervention. The first Trust (Newcastle) will kick off in July and begin testing of the 'Your Care Needs You' intervention which is designed to better prepare older people for taking care of themselves when they get back home after a hospital stay. We plan to be working with the intermediate care wards in Bradford initially with support from Liz Tomlin and colleagues in the Improvement team and Roshanne Fox as the Trust Principal Investigator.

### **Yorkshire and Humber Improvement Academy**

The Improvement Academy has now chalked up 8 years within the Bradford Institute for Health Research. Our focus is on supporting health services in our region to implement research with the ultimate aim of generating higher quality and safer health and care services across our region.

#### *Patient safety*

In April, the Improvement Academy was re-commissioned by the Yorkshire & Humber Academic Health Sciences Network to deliver NHS England's Patient Safety Improvement Programmes for a seventh year. In 2021/22 the commission includes improvements focussed on enhanced care and managing deterioration in care homes, a continued focus on medicines safety, and on maternity and neonatal services. A new programme focussed on improving safety of care for patients with a mental illness includes reducing seclusion and improving physical health. Viv Dolby's work as Lead Midwife for Maternal Enhanced Critical Care Network, funded by the Clinical Network and hosted by the Improvement Academy has been extended until September.

#### *Masterclasses and training*

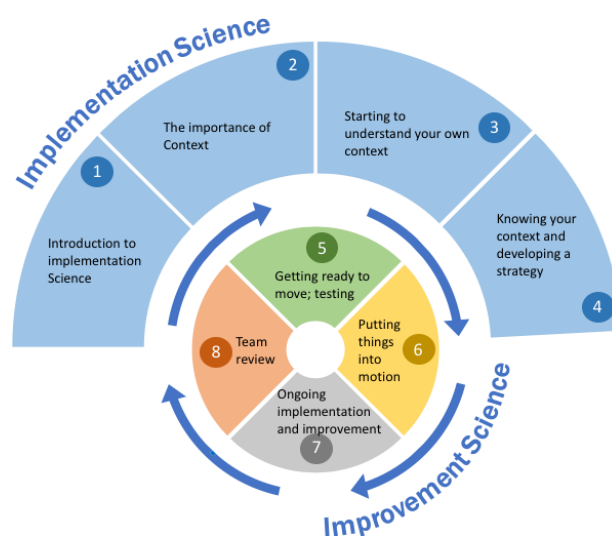
The Improvement Academy's range of virtual masterclasses, workshops and training courses now are available within the region (and nationally). Recent workshops have included Professor Mohammed Mohammed's course on Mortality Statistics which received enthusiastic praise from the Yorkshire & Humber mortality leads network. Other masterclasses include PET+: getting to the heart of patient and staff experience, and an introduction to ABC methods for achieving improvement through behaviour change.

Following on from taught masterclasses, we are working with several organisations who have asked for our support in developing practical improvement skills. We are currently running practical coaching programmes for organisations who want to establish safety huddles, learn from patient and staff experience, and apply behaviour change methods to nosocomial infections.

## Implementation

We have recently experienced increasing interest in our role as ‘implementation partner’. We draw on both *implementation* expertise and *improvement* expertise in our practical implementation work with partners. Supported by the ARC Applied Research Collaboration, our aim is to make implementation more effective.

Through these partnerships we will be working closely with several implementation projects funded through the National Institute for Health Research National Priorities Programme, and we are particularly looking forward to working more closely with our ActAsOne collaboration on ‘implementing innovation’ this year.



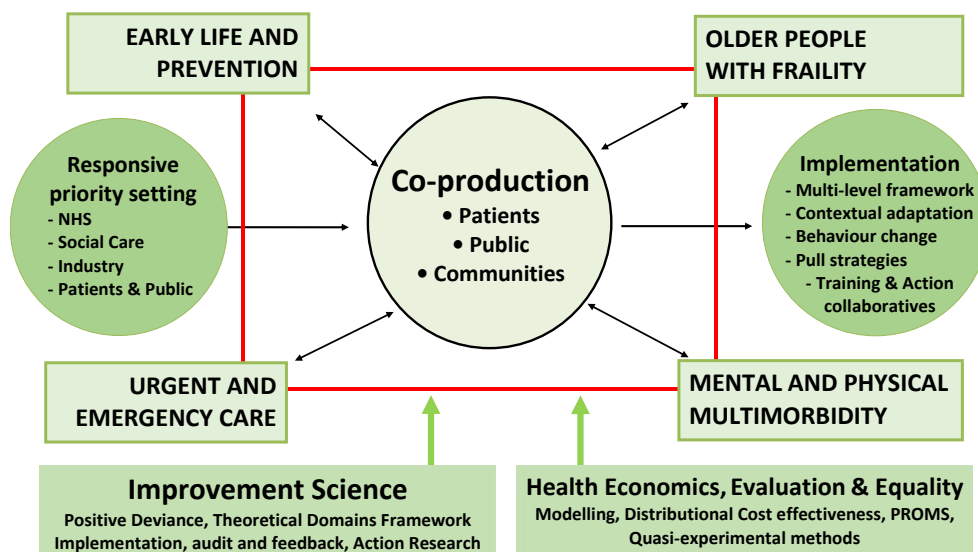
## NIHR YORKSHIRE AND HUMBER APPLIED RESEARCH COLLABORATION



Led by Prof John Wright, the NIHR Applied Research Collaboration Yorkshire and Humber (YHARC) is a five year programme of applied health research, hosted by Bradford Institute for Health Research, and delivered through a regional partnership including the NHS, Local Authorities, universities, Academic Health Sciences Network, voluntary and community organisations, and industry within Yorkshire and Humber.

YHARC supports research that aims to tackle inequalities and improve health and well-being for our communities. It has 4 core, and 3 cross-cutting themes of research, selected in consultation with partners and the public. Our 4 core themes are: Early Life and Prevention; Older People with Frailty; Mental and Physical

Figure 1: Yorkshire and Humber ARC Framework



Multimorbidity; and Urgent and Emergency Care. Our cross-cutting themes are: Improvement Science; Health Economics, Evaluation and Equity; and Implementation (figure 1). Four of these themes are led by colleagues at BIHR (Prof Rosie McEachan – Early Life and Prevention; Prof Andy



Clegg – Older People with Frailty; Prof Rebecca Lawton – Improvement Science; Beverley Slater and Dr Michael McCooe – Implementation Science)

During the last financial year, we have successfully delivered against our objectives and adapted to rapidly deliver additional Covid-19 focused research. Across the region during this period YHARC attracted £8.9m in external grant income, £1.76m in co-funding from partner organisations, recruited 8556 participants across 162 projects and funded 82 staff members and 54 PhD students.

**NIHR** | Applied Research Collaboration  
Yorkshire and Humber

## 2020-21 Key Metrics

